



**CHRISTENSEN
ARMS**



2022

PRODUCT CATALOG



Over the past 25 years,
Christensen Arms has
consistently been at the
forefront of firearm
innovation and wildlife
conservation efforts.

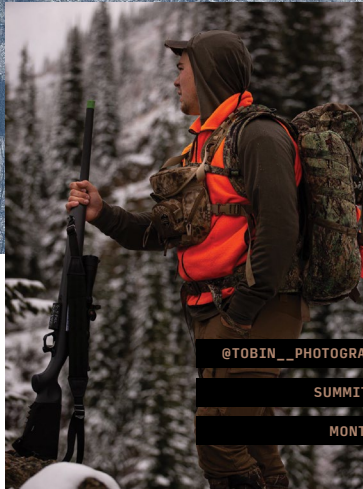
From the introduction of the carbon-fiber wrapped barrel to financial support of leading wildlife conservation groups, Christensen Arms is always finding new ways to improve the shooter's experience while protecting our beloved hobbies and traditions.



@MRSJESSBOND

MPR

OKLAHOMA



@TOBIN__PHOTOGRAPHY

SUMMIT TI

MONTANA

TABLE OF CONTENTS

SECTION 1

04

MOVING FORWARD
INTRODUCING
FFT / FLASH
FORGED
TECHNOLOGY

SECTION 2

06

HUNTING
RIFLES

08

MESA

09

NEW FOR 2022
MESA FFT

10

NEW FOR 2022
MESA FFT
TITANIUM
EDITION

14

RIDGELINE

15

NEW FOR 2022
RIDGELINE
FFT

16

INTRODUCING
SITKA CAMO
PATTERNS

18

NEW FOR 2022
RIDGELINE FFT
TITANIUM
EDITION

19

ELR

20

TRAVERSE

SECTION 3

22

MODERN
PRECISION
RIFLE & PISTOL

24

MODERN
PRECISION
RIFLE

25

STAINLESS
STEEL EDITION

26

COMPETITION
EDITION

27

TACTICAL
PRSR-HD
SCOPE RINGS

SECTION 4

28

TARGET
RIFLES

30

MESA LONG
RANGE

31

ULTRALIGHT
PRSR-X2 SCOPE
RINGS

SECTION 5

32

RIMFIRE

33

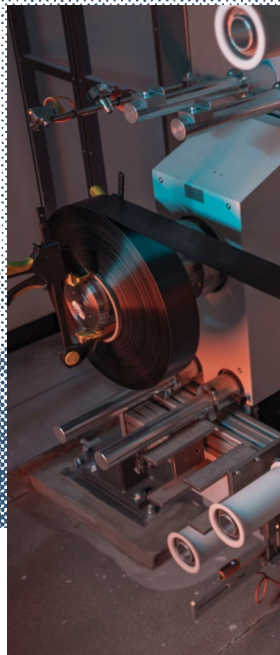
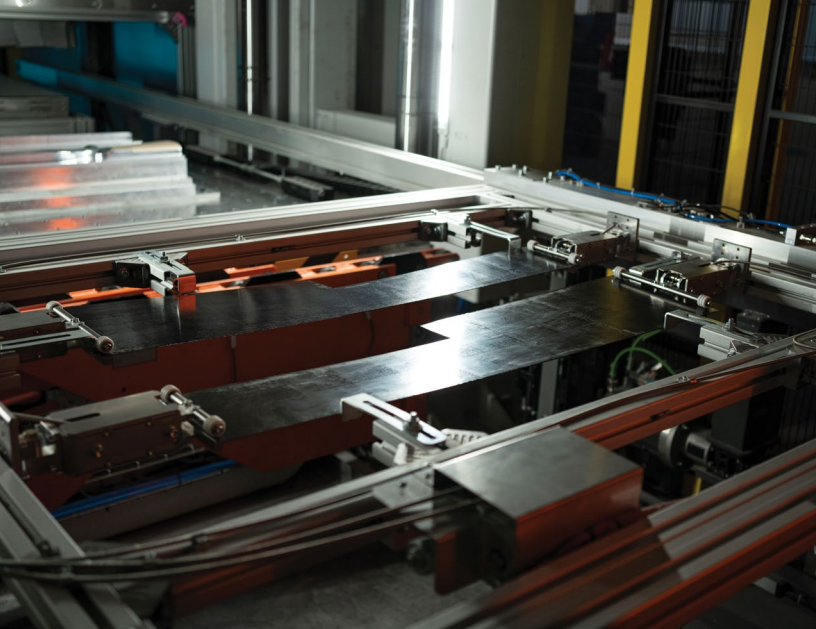
RANGER

34

PRSR
CANTILEVER
SCOPE MOUNT

35

WARRANTY/
REGISTRATION



INTRODUCING

fft

FLASH
FORGED
TECHNOLOGY

FOR 2022, THE NEWEST INNOVATION FROM CHRISTENSEN ARMS IS FLASH FORGED TECHNOLOGY (FFT™) WHICH REPRESENTS THE LATEST IN CARBON FIBER STRUCTURAL MANUFACTURING.

Instead of maintaining the status quo of “overbuilding” a product to meet safety standards, Flash Forged Technology employs an engineering approach to achieve the lightest possible structure while exceeding crucial strength and safety margins.

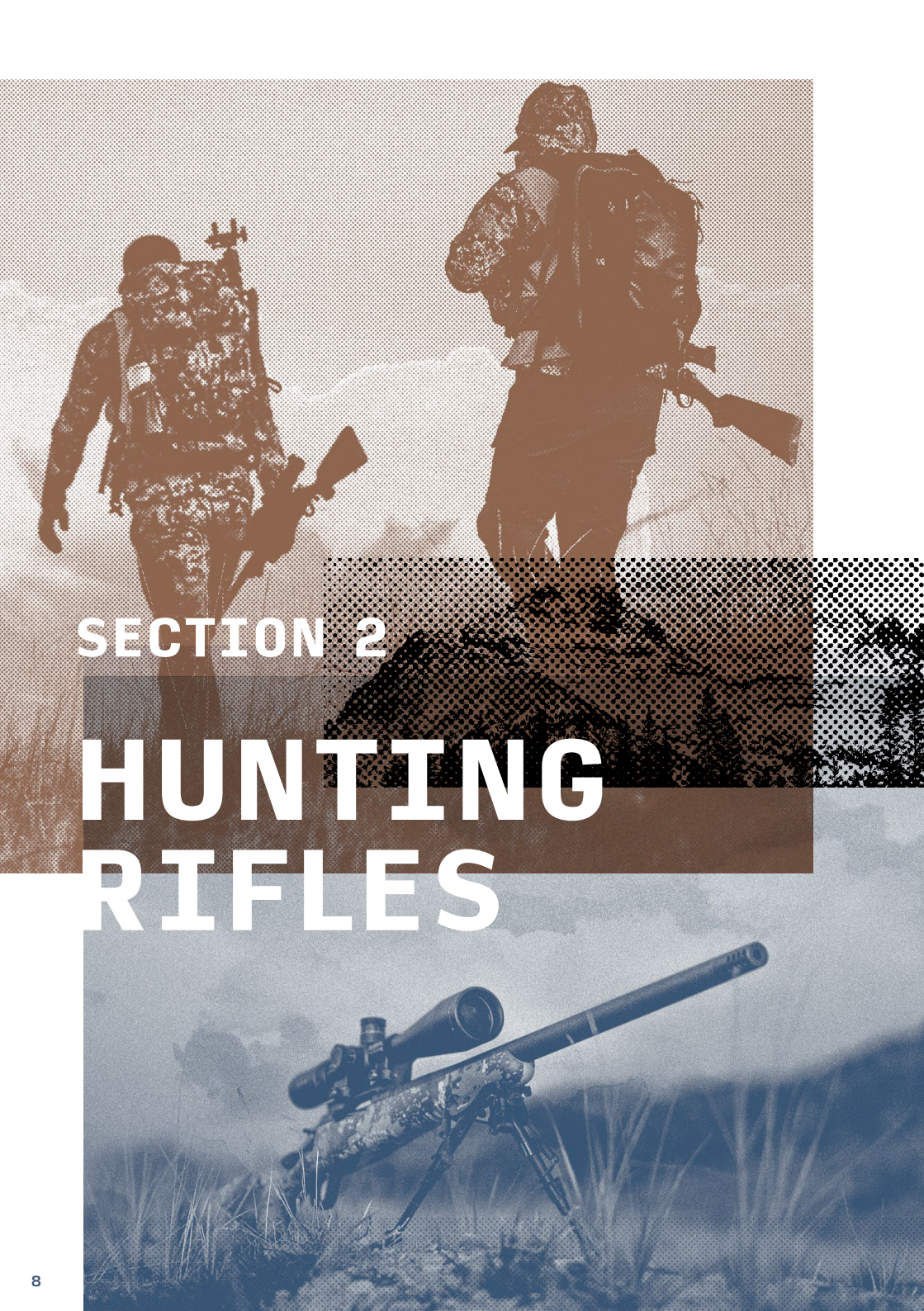


PUTTING THE FUTURE OF COMPOSITES IN PRACTICE

Utilizing an aerospace monocoque shell, Flash Forged Technology eliminates unnecessary internal weight. The result is an FFT-designed stock that is up to a full pound lighter than traditionally manufactured carbon fiber composite rifle stocks – creating a more consistent shooting foundation while reducing user fatigue in the field. Flash Forged Technology is available exclusively on select Christensen Arms firearms.

TECHNOLOGY THAT SUPPORTS WILDLIFE CONSERVATION

With conservation being at the forefront, Flash Forged Technology also results in greater environmental sustainability as it was created to save energy and eliminate waste. Utilizing automated processes and virgin recyclable materials, FFT is truly 100% zero-waste manufacturing. Trimmed composites are repurposed into new carbon fiber parts without producing harmful toxins or emissions. This new technology helps support Christensen Arms goal of wildlife conservation by reducing our environmental impact and protecting our lands and wildlife for the enjoyment of future generations – all while creating a superior product.



SECTION 2

**HUNTING
RIFLES**

HUNTING RIFLE CHAMBERINGS

● RIGHT HAND
 ◇ LEFT HAND

		BARREL LENGTH	TWIST RATE	MESA	MESA FFT	MESA FFT TI	RIDGELINE	RIDGELINE FFT	RIDGELINE FFT TI	ELR	TRAVERSE
223 Rem	16	1/8									
22-250 Rem	20	1/14					●				
	24	1/14				●				●	
243 Win	20	1/10				●◇	●◇			●	
6 MM ARC	16	1/8									
26 Nosler	22	1/8					●				
	26	1/8								●	
6.5 CRDMR	16	1/8									
	20	1/8		●◇	●◇	●◇	●◇	●◇			●
	22	1/8	●◇								
	24	1/8				●◇					●
	26	1/8								●	
6.5-284 Norma	22	1/8					●				
	26	1/8									●
6.5 PRC	20	1/8		●◇	●◇		●◇	●◇			
	22	1/8									
	24	1/8	●◇			●◇					●
	26	1/8								●	
7mm-08 Rem	20	1/9		●◇			●◇				
	22	1/9	●◇								
	24	1/9				●◇					●
280 Ackley	22	1/9					●				
	26	1/9					●				●
7mm Rem Mag	22	1/9		●◇	●◇		●	●			
	24	1/9	●◇								
	26	1/9				●◇				●	●
7mm PRC	22	1/8		●			●				
	26	1/8								●	●
28 Nosler	22	1/9		●◇	●◇		●◇	●◇		●	
	26	1/9	●◇			●◇				●	●
270 Win	22	1/10					●◇				
	24	1/10					●				●
270 WSM	20	1/10					●◇				
	24	1/10					●				●
308 Win	16	1/10									
	20	1/10		●◇	●◇	●◇	●◇	●◇			●
	22	1/10	●◇								
	24	1/10				●◇					●
30-06 Sprgfld	22	1/10					●				
	24	1/10					●				●
300 Win Mag	22	1/10		●◇	●◇		●◇	●◇			
	24	1/10	●◇								
	26	1/10				●◇				●	●
300 WSM	20	1/10					●				
	24	1/10					●				●
300 PRC	22	1/8		●◇	●◇		●◇	●◇			
	24	1/8	●◇								
	26	1/8				●◇				●	●
30 Nosler	22	1/10					●				
	26	1/10					●				●
300 RUM	22	1/10					●				
	26	1/10					●				●
375 H&H	22	1/12									●
338 Lapua Mag	27	1/9.3								●	●
450 Bushmaster	20	1/16	●	●		●	●	●			

HUNTING RIFLE STANDARD FEATURES

BARREL

Match Chamber

Precision Lapped

Button Rifled

Free Floating

Threaded Muzzle

ACTION ASSEMBLY

Christensen Arms Precision Machined Receiver

Enlarged Ejection Port

Skeletonized Bolt Handle

TriggerTech® Trigger (2.5-3.5 lb)

Billet Aluminum Machined Bottom Metal

Improved Bolt Release

BOLT

Twin Lug, Spiral Fluted

Black Nitride™ Treated

STOCK

Christensen Arms Carbon Fiber Composite

Stainless Steel Pillars

Spot Bedding

Included Recoil Pad

M16 Style Extractor

Fluted Bolt Knob

Dual Ejectors (Magnum Calibers)



MESA

STARTING AT
6.5 LBS

ACCURACY GUARANTEE
SUB-MOA

STARTING AT
£1,999⁹⁹

The Mesa is a premium lightweight hunting rifle offered at an accessible price. The rifle features a featherlight contour stainless steel barrel with a Cerakote® finish, “seamless” removable radial muzzle brake, and a sporter carbon fiber composite gunstock. The Mesa weighs in starting at 6.5 pounds and is backed by the Christensen Arms Sub-MOA Guarantee.

Select chamberings are available in a left-handed configuration.

BARREL

Christensen Arms 416R
Stainless Steel Barrel with a
Featherlight Contour

Stainless Steel “Seamless”
Radial Brake (Removable)

Threaded Muzzle
1/2 × 28 | 5/8 × 24

ACTION ASSEMBLY

Christensen Arms Precision Ma-
chined Receiver

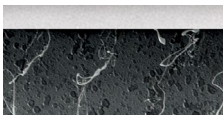
TriggerTech Trigger

STD Rem 700 Optics Base
Compatible

STOCK

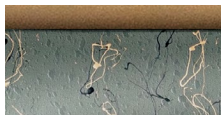
Christensen Arms Carbon Fiber
Composite Stock

COLOR OPTIONS



Black Stock with
Gray Webbing

Tungsten Barrel and
Action



Green Stock with
Black and Tan Webbing

Burnt Bronze Barrel
and Action



MESA FFT

STARTING AT
5.5 LBS

ACCURACY GUARANTEE
SUB-MOA

STARTING AT
£2,349⁹⁹

The new Mesa FFT is a great solution for backcountry hunting. The FFT sporter style stock weighs in starting at 5.5 pounds making it ideal on those long hikes up the mountain. The Mesa FFT utilizes an ultralight contour stainless steel barrel with a Cerakote® finish, “seamless” removable radial muzzle brake, and is backed by the Christensen Arms Sub-MOA Guarantee.

Select chamberings are available in a left-handed configuration.

BARREL

Christensen Arms 416R
Stainless Steel Barrel with a
Featherlight Contour

Stainless Steel “Seamless”
Radial Brake (Removable)

Threaded Muzzle
1/2 x 28 | 5/8 x 24

ACTION ASSEMBLY

Christensen Arms Precision Ma-
chined Receiver

TriggerTech Trigger

STD Rem 700 Optics Base
Compatible

FFT Floorplate and Bolt Knob

STOCK

Carbon Fiber FFT Stock



COLOR OPTIONS



Black Stock with
Gray Accent

Tungsten Barrel and
Action



Green Stock with
Black and Tan Accent

Burnt Bronze Barrel
and Action



Sitka Subalpine
Camo Stock

Black Nitride Action



Sitka Elevate II Camo
Stock

Black Nitride Action

NEW FOR 2022



MESA FFT

TITANIUM EDITION

STARTING AT

5.1 LBS

ACCURACY GUARANTEE

SUB-MOA

STARTING AT

£3,849⁹⁹

With the Mesa FFT Titanium, shooters can experience one of the lightest steel-barreled rifles ever built. The compact hunting rifle features a featherlight contour stainless steel barrel with a bead blasted finish and a removable seamless radial brake. The natural carbon fiber FFT sporter stock is finished with satin metallic gray accents for a striking look. The Mesa FFT Titanium Edition weighs in starting at 5.1 pounds and is backed by the Christensen Arms Sub-MOA Guarantee.

BARREL

Christensen Arms 416R
Stainless Steel Barrel with a
Featherlight Contour

Stainless Steel "Seamless"
Radial Brake (Removable)

Threaded Muzzle
1/2 x 28 | 5/8 x 24

ACTION ASSEMBLY

Christensen Arms Precision
Machined Titanium Receiver

TriggerTech Trigger

STD Rem 700 Optics Base
Compatible

FFT Floorplate and Bolt Knob

STOCK

Carbon Fiber FFT Stock



FLASH
FORGED
TECHNOLOGY

TITANIUM

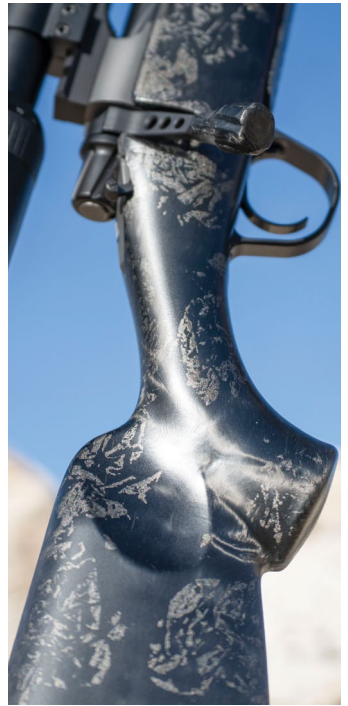
OUTBACK EDITION

COLOR OPTIONS



Natural Carbon Finish
Stock with Satin
Metallic Gray Accent

Natural Titanium Action









RIDGELINE

STARTING AT
6.3 LBS

ACCURACY GUARANTEE
SUB-MOA

STARTING AT
£2,949⁹⁹

The Ridgeline is our quintessential hunting rifle. Offered in a variety of chamberings, the rifle features a sporter carbon fiber composite gunstock and a stainless steel radial muzzle brake built around a light target contour Christensen Arms carbon fiber wrapped barrel. The Ridgeline weighs in starting at 6.3 pounds and is backed by the Christensen Arms Sub-MOA Guarantee.

Select chamberings are available in a left-handed configuration.

BARREL

Christensen Arms 416R Stainless Steel Aerograde Carbon Fiber Wrapped Barrel

Stainless Steel Radial Brake (Removable)

Threaded Muzzle $\frac{5}{8} \times 24$
($22-250-\frac{1}{2} \times 28$)

ACTION ASSEMBLY

Christensen Arms Precision Matched Receiver

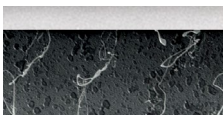
TriggerTech Trigger

STD Rem 700 Optics Base Compatible

STOCK

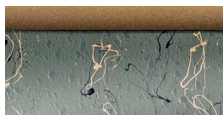
Christensen Arms Carbon Fiber Composite Stock

COLOR OPTIONS



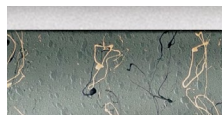
Black Stock with
Gray Webbing

Stainless Steel Action



Green Stock with
Black and Tan Webbing

Burnt Bronze Action



Green Stock with
Black and Tan Webbing

Stainless Steel Action

NEW FOR 2022



RIDGELINE FFT

STARTING AT
5.3 LBS

ACCURACY GUARANTEE
SUB-MOA

STARTING AT
£3,549⁹⁹

Utilizing the latest in carbon fiber manufacturing, the Ridgeline FFT is up to a full pound lighter while introducing additional features such as an FFT carbon fiber floor plate and bolt knob. The new side-baffle brake and stylish paint scheme distinguish the new model even further, all while retaining the Christensen Arms Sub-MOA Guarantee.

Select chamberings are available in a left-handed configuration.

BARREL

Christensen Arms 416R Stainless Steel AeroGrade Carbon Fiber Wrapped Barrel

Stainless Steel Side Baffle Brake (Removable)

Threaded Muzzle $\frac{5}{8} \times 24$
(22-250- $\frac{1}{2} \times 28$)

ACTION ASSEMBLY

Christensen Arms Precision Machined Receiver

TriggerTech Trigger

STD Rem 700 Optics Base Compatible

FFT Floorplate and Bolt Knob

STOCK

Carbon Fiber FFT Stock



FLASH FORGED TECHNOLOGY

COLOR OPTIONS



Black Stock with Gray Accent

Stainless Steel Action



Green Stock with Black and Tan Accent

Burnt Bronze Action



Sitka Subalpine Camo Stock

Black Nitride Action



Sitka Elevate II Camo Stock

Black Nitride Action



THE SCIENCE OF CONCEALMENT

Gore® Optifade® Concealment is the first hunter concealment approach to consider animal vision as the ultimate effectiveness test. This concealment pattern applies revolutionary new findings in animal vision science, camouflage science and advanced computer technology. In contrast with mimicry camouflage, which attempts to make the hunter match the environment, the premise of Gore® Optifade® Concealment is to prevent the animal from recognizing the hunter as the predator.



S I T K A

ELEVATED II

Gore® Optifade® Concealment Elevated II is designed for whitetail hunters in an elevated position. Its macro and micro pattern configurations echo the higher contrast of bright sky against the shaded underside of foliage while allowing hunters to extend their season as the leaves change. It's designed for engagement ranges of 80 yards or less and keeps the hunter undetectable at 15 up in a tree stand.

SUBALPINE

Gore® Optifade® Concealment Subalpine is designed for stalking and ambushing ungulates from ground level in tree-covered and vegetated terrain. Subalpine is optimized for engagement ranges of 50 yards and less.

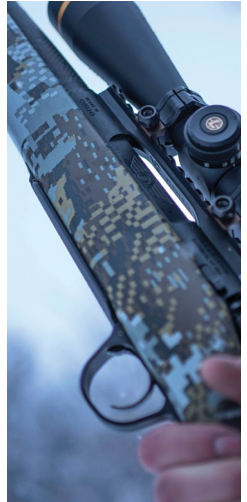
GORE®, OPTIFADE®, SITKA, and designs are trademarks of W.L. Gore & Associates.



SUBALPINE



ELEVATED II



ELEVATED II

NEW FOR 2022



RIDGELINE FFT

TITANIUM EDITION

STARTING AT
4.8 LBS

ACCURACY GUARANTEE
SUB-MOA

STARTING AT
£4,849⁹⁹

The Ridgeline FFT Titanium Edition combines a precision titanium action with our signature carbon fiber barrel for an exceptionally lightweight rifle. The firearm features a titanium side baffle brake, spiral fluted bolt, and an FFT sporter stock with a satin metallic gray accent finish. The Ridgeline FFT Titanium Edition weighs in starting at 4.8 pounds and is backed by the Christensen Arms Sub-MOA Guarantee.

BARREL

Christensen Arms 416R
Stainless Steel Aerograde
Carbon Fiber Wrapped Barrel

Titanium Side Baffle Brake
(Removable)

Threaded Muzzle 5/8x24

ACTION ASSEMBLY

Christensen Arms Precision
Machined Titanium Receiver

TriggerTech Trigger

STD Rem 700 Optics Base
Compatible

FFT™ Floorplate and Bolt Knob

STOCK

Carbon Fiber FFT Stock



FLASH
FORGED
TECHNOLOGY

TITANIUM

OUTBACK EDITION

COLOR OPTIONS



Natural Carbon Finish
Stock with Satin
Metallic Gray Accent

Natural Titanium Action



ELR

STARTING AT
7.5 LBS

ACCURACY GUARANTEE
SUB-MOA

STARTING AT
£3,939⁹⁹

The ELR is a dedicated long-range hunting rifle built for those who chase distant targets. The target contour Christensen Arms carbon fiber wrapped barrel compliments the adjustable long-range carbon fiber composite gunstock (with an enhanced grip angle and five flush cup mounts) and integral 20-MOA full picatinny rail to create a dependable platform for long-range applications. The titanium side-baffle muzzle brake saves additional weight. The ELR weighs in starting at 7.5 pounds and is backed by the Christensen Arms Sub-MOA Guarantee.

BARREL

Christensen Arms 416R
Stainless Steel Aerograde
Carbon Fiber Wrapped Barrel

Target Profile

Adjustable Titanium Side Baffle
Brake (Removable)

Threaded Muzzle $\frac{5}{8} \times 24$

ACTION ASSEMBLY

Christensen Arms Precision
Machined Receiver

Full-length Integral Picatinny
Rail (20 MOA)

TriggerTech Trigger

Oversized Fluted Bolt Knob

STOCK

Christensen Arms Carbon Fiber
Composite Long Range Stock

Adjustable Comb 0-.75 in.
(.25 in. Spacers)

Adjustable Length of Pull
0-1 in. (.25 in. Spacers)

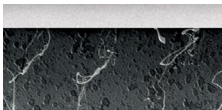
Modified Beavertail Forearm

Dual Sling Studs

Tactical Grip

Flush Cup Mounts (5)

COLOR OPTIONS



Black Stock with Gray
Webbing

Stainless Steel Action



TRAVERSE

STARTING AT
7.3 LBS

ACCURACY GUARANTEE
SUB-MOA

STARTING AT
£3,694⁹⁹

The Traverse elevates our backcountry rifle offerings with time-honored styling and performance. The Monte-Carlo carbon fiber composite gunstock gives it a classic feel, while the light target contour Christensen Arms carbon fiber wrapped barrel, stainless steel side-baffle brake, 0-MOA optic rail, and bottom picatinny rail ensure state-of-the-art operation. The Traverse weighs in starting at 7.3 pounds and is backed by the Christensen Arms Sub-MOA Guarantee.

BARREL

- Christensen Arms 416R Stainless Steel Aerograde Carbon Fiber Wrapped Barrel
- Adjustable Stainless Steel Side Baffle Brake (Removable)
- Threaded Muzzle $\frac{5}{8} \times 24$

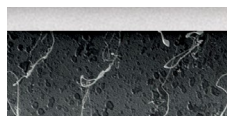
ACTION ASSEMBLY

- Christensen Arms Precision Matched Receiver
- STD Rem 700 Optics Base Compatible
- TriggerTech Trigger
- Oversized Fluted Bolt Knob
- 0-MOA Rail

STOCK

- Christensen Arms Carbon Fiber Composite Monte-Carlo Stock
- Modified Beavertail Forearm
- Raised Comb
- Forward Mount Rail
- Full Palm Swell
- Black with Gray Webbing

COLOR OPTIONS



- Black Stock with Gray Webbing
- Stainless Steel Action

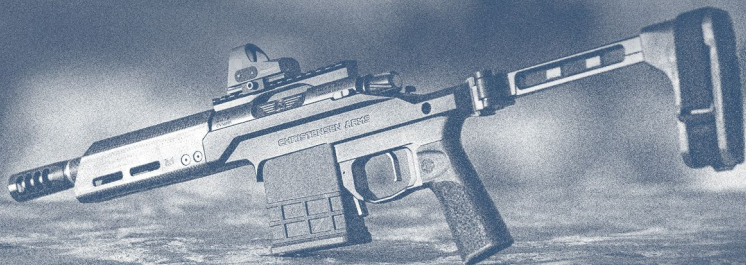


@JIMSHOCKEYOFFICIAL
TRAVERSE
CANADA



SECTION 3

**MODERN
PRECISION
RIFLE**



MODERN PRECISION RIFLE & PISTOL CHAMBERINGS

		BARREL LENGTH	TWIST RATE	CARBON FIBER BARREL	STAINLESS STEEL BARREL	COMPETITION
223 Rem	10.5	1/7				
	20	1/8	●	●		
	16	1/8	●			
	26	1/8				●
6 MM CRDMR	24	1/8	●	●		
6.5 CRDMR	12.5	1/8				
	22	1/8	●	●		
	24	1/8	●			
	26	1/8	●			
6.5 PRC	24	1/8	●	●		
7mm PRC	26	1/8	●			
300 BLK	7.5	1/5				
308 Win 308 Win	12.5	1/7				
	16	1/10	●			
	20	1/10	●	●		
	24	1/10	●			
300 Win Mag	26	1/10	●			
300 PRC	26	1/8	●			
338 Lapua Mag	27	1/9.3	●			



MODERN PRECISION RIFLE STANDARD FEATURES

BARREL

- Match Chamber
- Precision Lapped
- Button Rifled
- Free Floating
- Threaded Muzzle

ACTION ASSEMBLY

- Christensen Arms Precision Machined Receiver
- Enlarged Ejection Port
- Skeletonized Bolt Handle
- TriggerTech Flat Trigger (2.5-3.5 lb)
- Improved Bolt Release

BOLT

- Twin Lug, Spiral Fluted
- Black Nitride™ Treated
- M16 Style Extractor
- Fluted Bolt Knob
- Dual Ejectors (Magnum Calibers)





MODERN PRECISION RIFLE

STARTING AT
6.9 LBS

ACCURACY GUARANTEE
SUB-MOA

STARTING AT
£2,939⁹⁹

The Modern Precision Rifle with Flash Forged Technology is an ultra-lightweight chassis rifle designed to break with tradition. Beyond the folding stock, the complete package is well equipped with a target contour Christensen Arms carbon fiber barrel, carbon fiber comb, free-floating carbon fiber FFT handguard, standard AR-style grip, and a 20-MOA rail. The action and stainless steel side-baffle muzzle brake are finished in Black Nitride™ for a sleek look. The Modern Precision Rifle weighs in starting at 6.9 pounds and is backed by the Christensen Arms Sub-MOA Guarantee.

BARREL

Christensen Arms 416R Stainless Steel Aerograde Carbon Fiber Wrapped Barrel

Target Profile

Adjustable Stainless Steel Side Baffle Brake, (Removable) Black Nitride Finish

Threaded Muzzle
5/8 x 24 | 1/2 x 28

ACTION ASSEMBLY

Christensen Arms Precision Machined Receiver

STD Rem 700 Optics Base Compatible

Black Nitride Finish

Skeletonized Bolt Handle

Oversized Tactical Bolt Knob

TriggerTech Flat Trigger

AICS®-Compatible Detachable Magazine

Tactical-Mag Release

20-MOA Rail

CHASSIS

Christensen Arms 7075 Aluminum Billet Chassis

Hardcoat Black Anodize | Desert Brown Anodize | Tungsten Anodized

14 or 17 in. FFT Carbon Fiber Handguard with mLok

Folding Stock with Locking Hinge and MagneLock™ Technology

6 QD Mounts

V-Block Bedding

Standard AR Grip Compatible

Barricade Stop

Adjustable Flash Forged Technology Carbon Fiber Cheek Riser (1 in. Adjustment)

Adjustable Length of Pull (12.5–14.5 in.)

Monopod Picatinny Mount Ready

COLOR OPTIONS



Black Anodized Finish

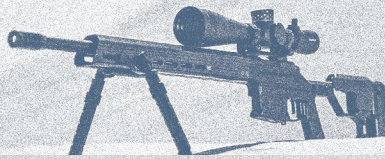


Desert Brown Cerakote Finish



Tungsten Cerakote Finish

NEW FOR 2022



MODERN PRECISION RIFLE

STAINLESS STEEL BARREL

STARTING AT
8.4 LBS

ACCURACY GUARANTEE
SUB-MOA

STARTING AT
£2,939⁹⁹

Now available with a #4 contour stainless steel barrel, the Modern Precision Rifle with Flash Forged Technology is now more accessible than ever. Built upon the award-winning lightweight chassis system, it is complete with a fully-adjustable folding stock, full-length carbon fiber handguard, and includes a 20-MOA optic rail.

BARREL

Christensen Arms 416R Stainless Steel Barrel

Black Cerakote Finish

#4 Contour Profile

Adjustable Stainless Steel Side Baffle Brake, (Removable) Black

Threaded Muzzle
5/8 x 24 | 1/2 x 28

ACTION ASSEMBLY

Christensen Arms Precision Machined Receiver

STD Rem 700 Optics Base Compatible

Black Cerakote Finish
Skeletonized Bolt Handle

Oversized Tactical Bolt Knob

TriggerTech Flat Trigger

AICS®-Compatible
Detachable Magazine

Tactical-Mag Release

20-MOA Rail

CHASSIS

Christensen Arms 7075 Aluminum Billet Chassis

Hardcoat Black Anodize | Desert Brown Anodize | Tungsten Anodized

17 in. FFT Carbon Fiber Handguard with mLok

Folding Stock with Locking Hinge and MagneLock™ Technology

6 QD Mounts

V-Block Bedding

Standard AR Grip Compatible

Barricade Stop

Adjustable Flash Forged Technology Carbon Fiber Cheek Riser (1 in. Adjustment)

Adjustable Length of Pull (12.5–14.5 in.)

Monopod Picatinny Mount Ready

COLOR OPTIONS



Black Anodized Finish



Desert Brown Cerakote Finish



Tungsten Cerakote Finish

NEW FOR 2022

NEW FOR 2022



MODERN PRECISION RIFLE

COMPETITION

STARTING AT
11.6 LBS

ACCURACY GUARANTEE
SUB-MOA

STARTING AT
£2,939⁹⁹

Specifically designed for competition shooting, the MPR competition pairs the best of the Modern Precision Rifle with a 26" target-profile stainless-steel barrel, a vertical grip with thumb rest, and the Trigger Tech Special flat-shoe trigger. The rifle features Tungsten Cerakote and is available in select short-action calibers.

BARREL

Christensen Arms 416R
Stainless Steel Barrel
Target Profile
Adjustable Stainless
Steel Side Baffle Brake,
(Removable) Black Nitride
Finish
Threaded Muzzle
5/8 x 24 | 1/2 x 28

ACTION ASSEMBLY

Christensen Arms
Precision Machined
Receiver
STD Rem 700 Optics Base
Compatible
Black Nitride Finish
Skeletonized Bolt Handle
FFT Bolt Knob
TriggerTech Special
Trigger
AICS®-Compatible
Detachable Magazine
5 or 10 Rd Mag
(Based on Availability)
Tactical-Mag Release
20-MOA Rail

CHASSIS

Christensen Arms 7075
Aluminum Billet Chassis
Hardcoat Black Anodize
17 in. FFT Carbon Fiber
Handguard with mLoc
Folding Stock with Locking
Hinge and Magelock™
Technology
6 QD Mounts
V-Block Bedding

CHASSIS CONT.

Vertical Grip with Thumb
Rest
Barricade Stop
Adjustable Flash Forged
Technology Carbon Fiber
Cheek Riser (1 in.
Adjustment)
Adjustable Length of Pull
(12.5–14.5 in.)
Monopod Picatinny Mount
Ready

COLOR OPTIONS



Tungsten Cerakote
Finish

PRODUCT FEATURE

TACTICAL PRSR-HD SCOPE RINGS

Whether chasing distant targets or trophy game, the TACTICAL PRSR-HD scope rings from Christensen Arms provide the most secure and advanced optic mounting platform available. The precision CNC-machined rings feature 6-bolt caps and a removable anti-cant bubble level to ensure shot-after-shot accuracy and unmatched performance.

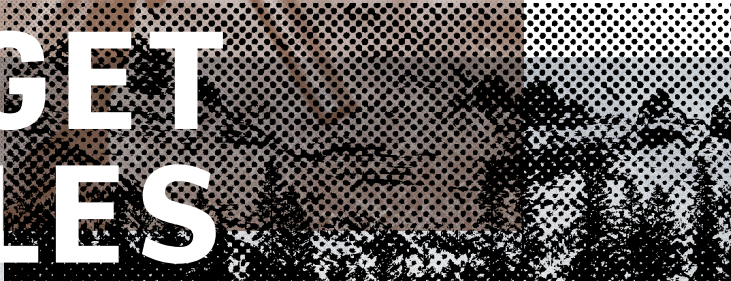
CHRISTENSENARMS.COM





SECTION 4

TARGET RIFLES



TARGET RIFLE CHAMBERINGS

	BARREL LENGTH	TWIST RATE	MESA LONG RANGE
223 Rem	16	1/8	
	20	1/8	
6 MM ARC	16	1/8	
6 MM CRDMR	24	1/8	
6.5 CRDMR	16	1/8	
	22	1/8	
	24	1/8	
	26	1/8	●
6.5 PRC	24	1/8	
	26	1/8	●
7mm Rem Mag	26	1/9	●
7mm PRC	26	1/8	●
28 Nosler	26	1/9	●
308 Win	16	1/10	
	20	1/10	
	24	1/10	●
300 Win Mag	26	1/10	●
300 PRC	26	1/8	●
338 Lapua Mag	27	1/9.3	●

CHRISTENSEN ARMS TARGET RIFLE STANDARD FEATURES

BARREL

Match Chamber
Precision Lapped
Button Rifled

Free Floating
Threaded Muzzle

ACTION ASSEMBLY

Christensen Arms Precision Machined Receiver
Enlarged Ejection Port
Skeletonized Bolt Handle
TriggerTech® Trigger (2.5–3.5 lb)
Billet Aluminum Machined Bottom Metal
Improved Bolt Release

BOLT

Twin Lug, Spiral Fluted
Black Nitride™ Treated
M16 Style Extractor
Fluted Bolt Knob
Dual Ejectors (Magnum Calibers)

STOCK

Christensen Arms Carbon Fiber Composite
Stainless Steel Pillars
Spot Bedding
Included Recoil Pad



MESA LONG RANGE

STARTING AT
8.9 LBS

ACCURACY GUARANTEE
SUB-MOA

STARTING AT
£2,489⁹⁹

The Mesa Long Range was designed for dedicated precision shooters and long-range hunters. The sturdy and ergonomic platform relies on a medium palma contour steel barrel with a Cerakote™ finish, an adjustable long-range carbon fiber composite gunstock, and features a seamless removable side-baffle muzzle brake. The Mesa Long Range weighs in starting at 8.9 pounds and is backed by the Christensen Arms Sub-MOA Guarantee.

BARREL

Christensen Arms 416R
Stainless Steel Barrel

Medium Palma Profile

Stainless Steel Side Baffle
Brake (Removable)

Threaded Muzzle
5/8 × 24 (Standard)

ACTION ASSEMBLY

Christensen Arms
Precision Machined Steel
Receiver

TriggerTech Trigger

Oversized Fluted Bolt Knob

STOCK

Christensen Arms Carbon Fiber
Composite Long Range Stock

Adjustable Comb 0–.75 in.
(.25 in. Spacers)

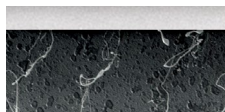
Adjustable Length of Pull 0–1
in. (.25 in. Spacers)

Modified Beavertail Forend

Dual Sling Studs

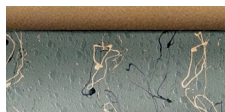
Tactical Grip

COLOR OPTIONS



Black Stock with
Gray Webbing

Tungsten Barrel and
Action



Green Stock with
Black and Tan Webbing

Burnt Bronze Barrel
and Action

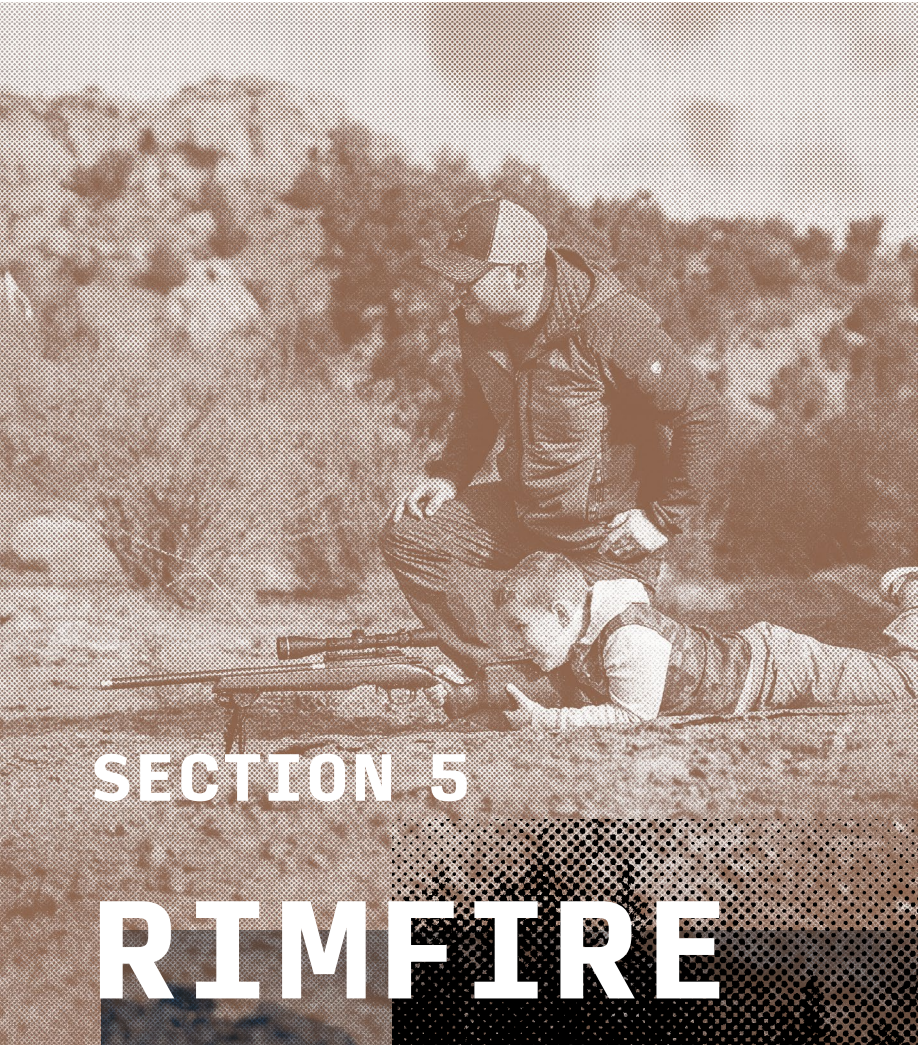
ULTRALIGHT PRSR-X2 SCOPE RINGS



When the pressure is on for the perfect shot during your next hunt, make sure you have the PRSR-X2 ultralight precision scope mounting system. The advanced CNC-machined rings are craftfully designed to optimize performance between the scope and rifle with each and every shot. Truly an epic balance from Christensen Arms where precision and lightweight align to deliver repeat performance.

CHRISTENSENARMS.COM





SECTION 5

RIMFIRE





RANGER

STARTING AT
5.1 LBS

ACCURACY GUARANTEE
SUB-MOA AT 50
YARDS

STARTING AT
£1,199⁹⁹

The Ranger brings a rimfire rifle back to the Christensen Arms lineup. Built for precision—the bolt-action platform features an aluminum receiver with a steel locking lug insert, Christensen Arms carbon fiber tension barrel, and a carbon fiber composite rimfire stock. The rifle is also well equipped with standard sling studs, a 0-MOA picatinny rail, and a match-grade Rem 700 style trigger. The Ranger weighs in starting at 5.1 pounds and is backed by a Christensen Arms Sub-MOA at 50 Yards Guarantee.

BARREL

Christensen Arms
Carbon Fiber Tension
Rimfire Barrel
Precision Lapped
Bentz Match Chamber
Threaded Muzzle
1/2 x 28

ACTION ASSEMBLY

Christensen Arms
Precision Machined
Aluminum Receiver
Dual Extractors
Dual Opposing Locking
Lugs
0-MOA Optic Rail
Triggertech Field
Trigger (Rem 700
Compatible)
Ruger® Rotary
Magazine

STOCK

Carbon Fiber Composite
Rimfire Stock
Palm Swell
Ambidextrous Grip
Recoil Pad
Flat Forend
Sling Studs
Palm Hook
Aluminum Pillars

CHAMBERINGS

22 LR 18" — 1/16
NEW FOR 2022
17 HMR 18" — 1/9
22 WMR 18" — 1/14

COLOR OPTIONS



Black Stock with Gray
Webbing

Black Nitride Action



Tan Stock with Black
Webbing

Black Nitride Action



Sitka Subalpine
Camo Stock

Black Nitride Action



Sitka Elevate II Camo
Stock

Black Nitride Action

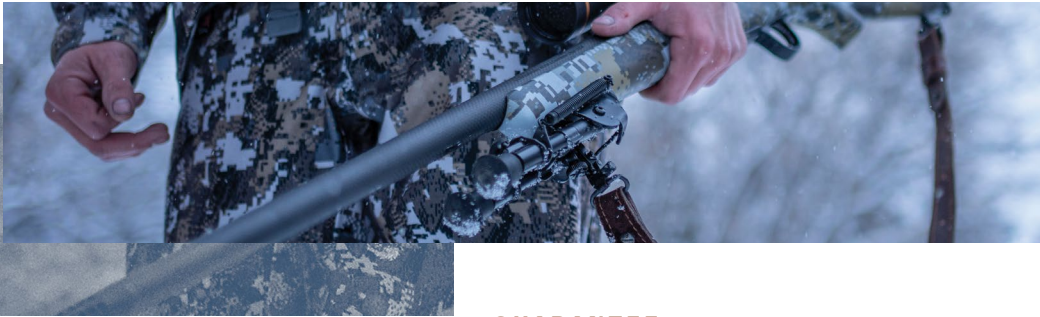
PRODUCT FEATURE

PRSR CANTILEVER SCOPE MOUNT

The Christensen Arms PRSR Cantilever Mount has been specifically designed to optimize accuracy and performance in the MSR platform. Constructed from lightweight anodized aluminum and utilizing stainless steel hardware, the MSR mount is designed to withstand the rigors of competition and endure the harsh environments encountered while hunting.

CHRISTENSENARMS.COM





LIMITED-LIFETIME WARRANTY

CHRISTENSEN ARMS warrants that the enclosed firearm was originally manufactured free of defects in material, workmanship and mechanical function. For the lifetime of the original purchaser, CHRISTENSEN ARMS agrees to correct any defect in the firearm for the original purchaser by repair, adjustment or replacement, at CHRISTENSEN ARMS' sole option, with the same or comparable quality components (or by replacing the firearms at CHRISTENSEN ARMS' option), subject to the limitations detailed below.

This limited warranty is null and void if the firearm has been misused; damaged (by accident or abuse); fired with improper ammunition; fired with an obstruction in the barrel; damaged through failure to provide reasonable and necessary maintenance as described in the manual accompanying the firearm; or if unauthorized repair or any alteration, including of a cosmetic nature, has been performed on the firearm by a party other than CHRISTENSEN ARMS. This limited warranty does not cover any damage caused by hand loaded, reloaded, or other improperly loaded ammunition. This limited warranty does not apply to normal wear and tear of any parts.

Subject to the foregoing, this limited warranty confers the right to have the covered firearm or its parts repaired, adjusted or replaced exclusively upon the original purchaser, which right is not transferable to any other person. No implied warranties of any kind are made herein and this warranty does not apply to any accessory items attached or appurtenant to the firearm.

In no event shall CHRISTENSEN ARMS be liable for any incidental or consequential damages arising from or in connection with this limited warranty.

Product prices, specifications, and appearances herein are subject to change without prior written notice. We are not responsible for typographical errors or omissions. Christensen Arms reserves the right to modify product prices and specifications without prior written notice or customer consent. All trademarks, designs, and graphical illustrations herein are the property of Christensen Arms. We

GUARANTEE

In ballistic terms, a MOA (Minute of Angle) is the arc formed by an angle of one minute or 1/60th of 1/360th of a circle (each degree is split into 60 minutes), like degrees on a compass.

The customer is responsible for following our barrel break-in process and using high quality, match-grade ammunition, and proper use conditions.

Any firearm that falls under our Sub-MOA Guarantee is guaranteed to be capable of shooting 3 shots within 1 MOA (roughly 1 inch at 100 yards).

1/2 MOA Guarantee rifles have a 1/2 MOA accuracy guarantee with calibers .30 and below. Calibers larger than .30 have a 1 MOA guarantee. The customer is responsible for ensuring proper break-in of the firearm during the warranty period, selecting high quality, match-grade ammunition and proper use conditions.

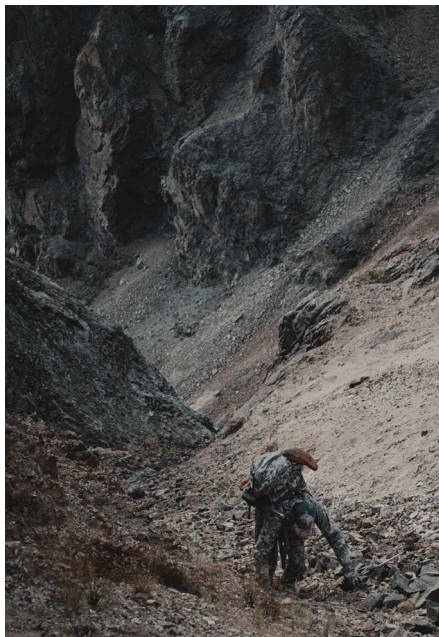
Many factors influence accuracy such as ammunition, ambient conditions, shooter ability, etc.

DISCLAIMER

Christensen Arms delivers a firearm free of defects. Our guarantee requires that firearm owners safely handle, properly break-in and properly maintain the firearm. Improper use or owner modifications to the firearm voids the guarantee and warranty.

Christensen Arms reserves the right to modify the features of the models shown, which may differ from the photographs shown.

endeavor to maintain our product information to be as accurate as possible at time of print and promotion. Please visit our website at www.ChristensenArms.co.uk for the most up-to-date specifications and information regarding all of our products.



UK01

A person in outdoor gear is climbing a steep, rocky mountain slope. The person is wearing a backpack and using a climbing rope. The background is a dark, textured mountain face.

CHRISTENSEN ARMS

ADDRESS

HIGHLAND OUTDOORS LTD
PO BOX 10024
NORTH KILWORTH
LUTTERWORTH
LE17 9EJ

PHONE

0345 099 0252

EMAIL

SALES@CHRISTENSENARMSUK.CO.UK

FACEBOOK

[CHRISTENSENARMSUK](#)

INSTAGRAM

[CHRISTENSENARMSUK](#)

CHRISTENSENARMSUK.CO.UK